



PHILANTOPICS

Association of Fundraising Professionals

October 2008

Board of Directors

PRESIDENT

April Gould, CFRE 309-655-1653

PRESIDENT-ELECT

Mark Roberts, CFRE 309-674-8730

PAST PRESIDENT/GOVERNANCE

Janet Bantz Glavin 309-637-1659

TREASURER

Roger Meyer, CFRE 309-655-4874

ASSISTANT TREASURER

Michael J. Maginn 309-671-2144

SECRETARY

Gloria Dearborn 309-671-1094

MEMBERSHIP SERVICES

Robin Ballard 309-694-8511

PROFESSIONAL ADVANCEMENT

Nicole Parlier 888-342-2383

EXTERNAL AFFAIRS

Shelly Smith, CFRE 309-677-3091

NEWSLETTER EDITOR

Rich Draeger, CFRE 309-655-1348

EVERY MEMBER CAMPAIGN

Pat Poppe 309-662-0461

GOVERNMENT RELATIONS

Mark Roberts, CFRE 309-674-8730

DIVERSITY

Kristen Bertchold 309-688-8671

DIRECTORS

Sarah Chaddock 309-566-5669

Jennifer Lee 309-686-0962

Stephanie Pickett 309-687-7213

Dennis Steele 309-693-8291

NEWSLETTER QUESTIONS?

Rich Draeger, CFRE 309-655-1348

Rich_Draeger@usc.salvationarmy.org

MEETING RESERVATIONS?

Gloria Dearborn 309-671-1094

devlpmt@peoriasymphony.org

ADDRESS/CONTACT CHANGES?

Heather Wolbeck 309-643-9236

hwolbeck@sbcglobal.net



FRIENDS OF DIVERSITY
ASSOCIATION OF FUNDRAISING PROFESSIONALS 2007

Getting Your Board Involved In Fundraising

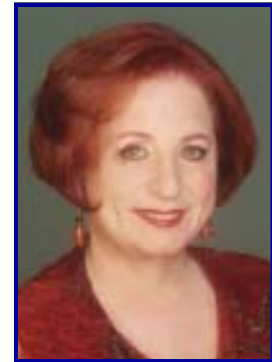
Please join us for the **October 8** AFP Chapter Meeting on *Getting Your Board Involved in Fundraising* with Carol Weisman of Board Builders. She will present on how to motivate your board to be more involved in your organizational fundraising efforts.

Carol Weisman is the President of Board Builders. She is an internationally known speaker, author, trainer and consultant who specializes in volunteerism, fundraising and governance. Carol works primarily in the United States, Canada, Australia and the UK. She has served on thirty boards and has been president of seven.

Carol began her professional career working with street gangs, a marvelous background for working with boards. She found the gangs better organized, with clearer expectations and a solid leadership training program. Although she doesn't recommend any fundraising that would end in incarceration, the gangs certainly had some creative ideas.

Carol has an MSW from Washington University in St. Louis and is the author of 8 books. Her most recent book, *Raising Charitable Children* is already in its 3rd printing and was featured in December in *The New York Times*, *Parade Magazine*, and *Scholastic Parent and Child*.

When not speaking and writing, Carol is training with a group of plus-sized runners called *The Chaffing Dishes*.



Carol Weisman
President, Board Builders

The **October 8** AFP Chapter Meeting will be held at the American Red Cross located at 311 W. John Gwynn Jr. Ave. in Peoria. The cost is \$25 for Central Illinois Chapter AFP Members, \$30 for AFP Members of other chapters and \$40 for guests. **Registration is at 11:00 a.m., lunch is provided at 11:30 a.m. and the presentation is from 12:15 p.m. until 3:00 p.m.**

Directions From Bloomington

Take I-74 West towards Peoria. Take Riverfront Drive, Exit 94 towards downtown Peoria. Take the W. Washington St./IL 40 North ramp. Turn right slightly onto Washington St. and cross bridge. Turn left onto John Gwynn Jr. Ave. The American Red Cross is on your right.

Reservations

Reservations are due **October 3rd**. Contact Gloria at devlpmt@peoriasymphony.org.



This seminar is CFRE approved!

***8 Breakthrough Strategies for the Next Decade of Fundraising:
An Executive Briefing***

You are invited to attend an informational session entitled, "**8 Breakthrough Strategies for the Next Decade of Fundraising: An Executive Briefing**". Your presenter will be Jason Schmittler who brings with him hands-on experience from the nonprofit world. There is no cost for this entertaining and educational session, which is brought to you by eTapestry. To register for this event, go to <http://www.etapestry.com/seeit> and select "Seminar Registration."

Date: October 1, 2008
Time: 9:00 a.m. until 11:30 a.m.
Location: Lutheran Hillside Village Foundation
6901 North Galena Road
Peoria, IL 61614

***Welcome New Members to the
Central Illinois Chapter of the Association of Fundraising Professionals.***

Please welcome the following new member to our AFP Central Illinois Chapter!

Ashley Psinas
Communications/Fund Development
Girls Scouts of Central Illinois
1103 W. Lake Avenue

Congratulations to AFP Member Rich Draeger!

In addition to his Community Relations responsibilities for the Salvation Army, Rich has taken on new responsibilities as their Assistant Development Director.

Please let us know if you have changed jobs or positions within your organization so we can let your friends at AFP know. You may contact our VP of Membership, Robin Ballard, at rballard@icc.edu.

International Conference Scholarship Applications Due September 15

The 2009 AFP International Conference on Fundraising will take place March 29 - April 1 in New Orleans. If you have never attended an International Conference and are an AFP member, you are eligible to apply for the Central Illinois Conference Scholarship which covers up to \$1,000 toward your conference expenses. For application and scholarship details, see link: http://www.afpcentralillinois.org/International_Conference_Scholarships.html.

For more information about the International Conference check out the AFP website: <http://conference.afpnet.org/>.

Chapter Offers C. Wilson Schroeder Membership Scholarships

Want to join AFP but don't have the funds? You may be eligible for a chapter membership scholarship. Applications for C. Wilson Schroeder Membership Scholarships are due October 15 to the Central Illinois Chapter of AFP. The Chapter will pay the recipient's first year of introductory national membership fee and half the local dues. In the second year, the recipient will pay the local dues. For more information and an application, see link: <http://www.afpcentralillinois.org/membershipscholarship.html>.

*Make your
reservations
today!*

Getting Your Board Involved In Fundraising

Wednesday, October 8
The American Red Cross, Peoria
Registration at 11:00 a.m., Lunch at 11:30 a.m.
Seminar 12:15 p.m. until 3:00 p.m.

Name: _____ Organization: _____
Address: _____ City/State/Zip: _____
Phone: _____ E-Mail: _____

\$25 per Central IL AFP member \$30 for other AFP Chapter members \$40 per guest
Amount Enclosed \$ _____

To make your reservations for the October meeting, contact Gloria Dearborn at devlpmt@peoriasymphony.org.

Please send this form with a check marked "October" payable to: **AFP Central Illinois Chapter**

Central Illinois AFP, P.O. Box 5323, Peoria, IL 61601

RESERVATIONS ARE DUE BY OCTOBER 3.

Director of Development Position Opening

Position Available: Director of Development, WTVP

Job Summary: This position has planning, management and oversight responsibilities for activities and personnel associated with annual fundraising/development.

Major Duties: Oversee development of the membership program. Plan and implement on-air, direct mail and telemarketing asks. Supervise Development Department personnel. Plan and work with Departmental budgets. Other duties as assigned.

Requirements: Bachelor's Degree or equivalent; minimum of 5 years increasing responsibility in fundraising/development, exceptional oral and written communications skills ; knowledge and demonstrable experience in budgeting and finance; computer database management experience; and, the ability to work occasional evenings, week ends and odd schedules. No resumes considered without accompanying cover letter.

Salary: Negotiable

Availability: Open until filled

Applications: Resumes, applications, inquiries, full job descriptions by mail or email only. No calls or personal visits please.

WTVP
101 State Street
Peoria IL 61602
www.wtvp.org

2009 AFP Board of Directors Proposed Slate

Please review the proposed slate of officers for the 2009 AFP Board of Directors below.
It is also located on our website at www.afpcentralillinois.org.

In accordance with our by-laws, this 2009 slate will be presented to our membership at the October Chapter meeting. You may cast your vote, aye or nay, for the proposed slate by e-mailing Janet at glavin@wishes.org by November 15, 2008.

AFP- Central Illinois Chapter, 2009 Chapter Officers & Board

PROPOSED-Term Expiration in Parenthesis

Chapter President, Mark Roberts, CFRE (2010)

Executive Director and CEO

Community Foundation of Central Illinois

Past President/Governance Chair, April Gould, CFRE (2010)

Gift Advisor

The Salvation Army

Treasurer, Michael J. Maginn (2010)

Executive Director and CEO

Central Illinois Friends of People with AIDS, Inc.

Government Relations Chair, Roger Meyer, CFRE (2010)

Chief Development Officer

OSF Healthcare Foundation

VP Professional Advancement, Nicole Parlier Campen (2009)

Associate Manager

American Diabetes Association

VP/External Affairs, Rich Draeger, CFRE (2010)

Assistant Development Director

The Salvation Army

Diversity Chair, Vikki Baptiste (2010)

Development Specialist

Mid-Central Community Action

At Large Directors

Jennifer Lee (2009)

Executive Director

The Peoria Art Guild

Shelly Smith, CFRE (2010)

Senior Director of the Bradley Fund

Bradley University

President-Elect, Kristen Berchtold, (2010)

Chief Operating Officer - Fund Development

Girl Scouts of Central Illinois

Secretary, Stephanie Pickett (2010)

Fund Development and Communications Coordinator

Childrens Home Association - Illinois

Asst. Treasurer, Leaving vacant for 2009

VP Membership Services, Robin Ballard (2009)

Executive Director and CDO

Illinois Central College Educational Foundation

Communications/Newsletter Editor, Kimberly Weeks (2010)

Development Assistant

TCRC, Inc.

Every Member Campaign Chair, Pat Poppe (2009)

Director of Public Relations & Development

YWCA of McLean County

Jeff Parmenter, (2010)

Executive Director

Big Brothers/Big Sisters

Dennis Steele (2010)

President

Dennis Steele Associates