



PhilanTopics

Association of Fundraising Professionals

November, 2011

Board of Directors

PRESIDENT

Kristen Berchtold, CFRE
kberchtold@arcpeoria.org
309-689-3608

PRESIDENT-ELECT

Kimberly Weeks, CFRE

PAST PRESIDENT/GOVERNANCE

Mark Roberts, CFRE 309-674-8730

TREASURER

BreeAnn Hohulin 309-694-5778

SECRETARY

Beth Gilbert Reusch 309-692-7631

MEMBERSHIP SERVICES

Robin Ballard 309-694-8511

PROFESSIONAL ADVANCEMENT

Rachel Sprengle 309-636-3324

EXTERNAL AFFAIRS

Emily Happach 309-687-7299

NEWSLETTER EDITOR

Kimberly Weeks, CFRE

EVERY MEMBER CAMPAIGN

Rich Draeger, CFRE 309-544-1348

GOVERNMENT RELATIONS

Roger Meyer, CFRE 309-655-4874

DIVERSITY CHAIR

Shelly Smith, CFRE 309-677-3091

DIRECTORS

Jenna Ciccicarelli 309-686-7000

Mike Fifhouse 309-673-6136

Jeff Parmenter 309-637-1771

Julie Witte 309-686-1177

NEWSLETTER QUESTIONS?

Kimberly Weeks, CFRE
kimberlyweeks227@gmail.com

MEETING RESERVATIONS?

Beth Gilbert Reusch 309-692-7631
bgilbert@peoriaymca.org

ADDRESS/CONTACT CHANGES?

Jeff Scheirer jeffs@hoibbbs.org

28th Annual National Philanthropy Day Awards Luncheon

Changing The World With A Giving Heart

Please join us for the 28th Annual National Philanthropy Day Awards Luncheon on November 9th at the Par-A-Dice Hotel in East Peoria. National Philanthropy Day (NPD) is a special day set aside to recognize and pay tribute to the great contributions that philanthropy – and those people active in the philanthropic community – have made to our lives, our communities and our world. Approximately 125 NPD events, involving over 50,000 people across North America will take place in 2011.

The following 2011 award recipients will be honored:

Outstanding Philanthropist

Wayne Baum

Outstanding Philanthropic Corporation

Russell's Cycling and Fitness

Lewis J. Burger Outstanding Volunteer Fundraiser

Joan Janssen

Outstanding Philanthropic Organization

Pilot Club of Peoria

Outstanding Youth in Philanthropy Ages 5-17

Ms. Claudin's Class at Kiefer School

Ian T. Sturrock Outstanding Fundraising Executive

Nikki Cole



CHANGE THE WORLD

WITH A GIVING HEART

National Philanthropy Day®

The cost is \$35 per person and reservations must be received no later than November 2nd. See page 2 for a registration form. For additional information, contact Emily Happach at 687-7275 or EHappach@chail.org.



2010
Ten Star AFP Chapter
Central Illinois Chapter



FRIENDS OF DIVERSITY
ASSOCIATION OF FUNDRAISING PROFESSIONALS 2010

28th Annual National Philanthropy Day Luncheon Reservation Form

Please reserve _____ place(s) at \$35 per person

If possible, please seat me at the table of _____ (tables seat ten)

I am unable to attend the National Philanthropy Day luncheon, but would like to support the event with an underwriting contribution of \$_____.

Please Print

Name: _____

Organization: _____

Address: _____

City: _____ Zip: _____

Phone Number: _____

E-mail: _____

Special Needs (dietary / physical): _____

Are you a nominator? Yes No Are you a past award recipient? Yes No

If you are reserving for more than one person, please list the names of the individuals to be included at your table on a separate sheet.

Enclosed is a check for \$ _____ (\$35 per person)

Please make checks payable to: *AFP, Central Illinois Chapter*

Reservations must be received no later than November 2

Reservations are not refundable, but are transferable

Send this form, along with payment, to:

AFP, P.O. Box 5323, Peoria, IL 61601

Government Relations *Roger Meyer, CFRE*

Cap on Charitable Deduction Dropped From Senate American Jobs Act

Senate Majority Leader Harry Reid (D-NV) announced on October 5, 2011 that he has introduced an amended version of the American Jobs Act that replaces the President's proposed 28 percent cap on itemized deductions for individuals earning over \$200,000 and families over \$250,000, with 5.6 percent surtax on taxpayers earning more than \$1 million a year.

The White House has approved the new offset and the Senate will begin debating the amended proposal the week of October 11, 2011.

While it is great news that the cap has been removed from the Jobs Act, and an affirmation that the nonprofit sector's concerns were heard, **we encourage you to continue to voice your concerns to your lawmakers.**

AFP Membership
Robin L.T. Ballard



On behalf of the AFP Board of Directors we would like to welcome the following new members who recently joined Central Illinois AFP:

Steve Schroeder

Director of Development & PR
 The Salvation Army
 611 W. Washington
 Bloomington, IL 61701
 Phone: (309) 829-9476
steve_schroeder@usc.salvationarmy.org

Kate M. Sies

Development Associate
 OSF St. Joseph Medical Ctr Fndtn
 3200 E Washington
 Bloomington, IL 61701
 Phone: (309) 665-4902
katem.sies@osfhealthcare.org


Lou Tenarvitz

VP Community & Donor Relations
 Children's Home
 2130 N. Knoxville
 Peoria, IL


Remember to check out the Central Illinois AFP website <http://www.afpcentralillinois.org/>

There is a **member's only** section for, you guessed it, members only. If you have forgotten the password, send me an email and I'll get it to you.

It's a great time to join AFP. Now through November 30th, in honor of National Philanthropy Day, new Active Members will receive a \$50 discount on membership. **The coupon below must be attached to the new member application** – unfortunately, refunds will not be given after the fact so be sure to attach the coupon.



CHANGE THE WORLD



WITH A GIVING HEART

National Philanthropy Day®

\$50.00 Active New Member Discount

In honor of National Philanthropy Day®, AFP will be offering a \$50.00 discount to new members joining in the Active category by November 30, 2011.

Fill out the membership invitation as usual, but deduct \$50.00 from the total and include this coupon with your payment.*

*Coupon *must* be included with payment
 One coupon per new member. **Expires November 30, 2011**

Questions, call the AFP Membership Department at (800)666-3863.

AFP members – if your name hasn't been drawn yet, please remember to **bring your business card** to each chapter meeting so you can enter into the drawing for a cool gift and the **Member Spotlight**.

If you or someone you know would like information on becoming an AFP member, please contact me (309) 694-8511 or rballard@icc.edu and I will be happy to send information or talk with you about it.

Members on the Move:

If you have changed positions, please let me know so I can announce it in PhilanTopics. Also, please make sure you go onto the AFP website to make the change so we will have the most up to date information on you.

Member Spotlight
Paul Gesterling
Director of Advancement, Central Catholic High School



1. What are your responsible for at Central Catholic High School?

As the Director of Advancement, I am responsible for getting people interested, involved and invested in the school.

2. What impresses you most about Central Catholic?

I love the culture of the school. For over 100 years, the school has built a foundation of faith and excellence, but is still willing to change to appropriately articulate those values to today's students.

3. How did you get your start in fundraising?

My first job out of college was as a missionary, where I had to fundraise my entire salary. Since my livelihood was at stake, fundraising became very personal very quickly. I quickly grew to love the challenge and opportunity to share my story with others.

4. What is the best thing about your job?

I love connecting benefactors with the story of our students and our school.

5. How long have you been involved with AFP and what do you like about it?

This is the first year I have joined AFP. Though I have participated in many different workshops and conferences, I am excited for the constant professional information AFP offers throughout the year.

6. What is the best career advice you've ever received?

If you don't know where you are going, you'll end up some place else.
~ Yogi Berra

7. What do you hope to do in your career that you have not yet done?

Though I have discussed it with donors, I have not yet gone through the entire process of helping a donor establish a planned gift. I think it would be a profound experience to align the needs of an institution and the desires of a benefactor in such a mutually significant way.

8. Describe your perfect day.

My perfect day would start early with a run and prayer, be filled with great food, friends and family and end with a sense of achievement and gratitude for advancing the missions of the school and my family.

Member Spotlight Emily Happach

Special Events Coordinator, Children's Home Association of Illinois

1. What are your responsible for at Children's Home?

My primary responsibility is overseeing the planning and execution of our special events. Outside of our major fundraisers/special events, I am responsible for our agency Art Contest, Keepsacks for Kids Project, volunteer coordination, our Holiday adoption, and work with community stakeholders and agency personnel to build the community's capacity to support and acknowledge youth in philanthropy.

2. What impresses you most about Children's Home?

I'd have to say the agency's history. Children's Home has had the same mission/vision of caring for the kids and families in our community for almost 145 years.

3. How did you get your start in fundraising?

I actually started at the Children's Home as a Prevention Educator for our teen pregnancy prevention program. Following this I spent some time working with the girls living in our Residential Program. Having had the experience of working for both our community based and in-house programs, I felt strongly about joining the Community and Donor Relations team in order to advocate for the kids and families we serve. I was in a unique position to tell their stories first hand while raising awareness and dollars for our mission; *Giving children a childhood and future by protecting them, teaching them and healing them, and by building strong communities and loving families.* And the rest is history! I love what I do and I hope to stay in this field for a very long time.

4. What is the best thing about your job?

Hands down my team and co-workers! They are all so amazing and talented, I feel very fortunate to be able to work alongside of them every day. I also love the freedom I have to be creative.

5. How long have you been involved with AFP and what do you like about it?

I have been a member of AFP since 2008. As a board member I served on the National Philanthropy Day committee and now serve as the VP of External Affairs on the board and chair the steering committee for NPD. I love being a part of AFP. You know you did something right in your life when find yourself sitting in chapter and board meetings surrounded by compassionate people who do so much to help our community grow.

6. What is the best career advice you've ever received?

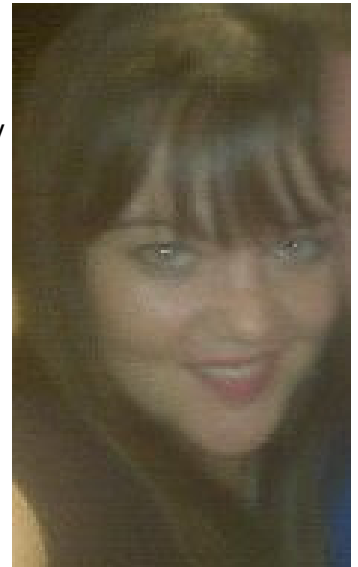
Never stop learning.

7. What do you hope to do in your career that you have not yet done?

I would love to run my own non-profit arts center for at-risk teens. A center that provides a safe place after school where they can learn creativity by "telling their stories" through theatre, audio, music, poetry/rap, dance or graffiti/visual arts.

8. Describe your perfect day.

On a perfect day, I would be relaxing with my friends and family. Oh, and enjoying the fact that the Cubs just won the World Series and the Bengals were undefeated.



Dear AFP Members:

The AFP Central Illinois Chapter Board is pleased to present the proposed 2012 Chapter Officers and Board of Directors. (See attached.)

As an eligible voting member of the Central Illinois chapter, you have the opportunity to vote for their election via email to Mark Roberts, Governance Chair, through October 31, 2011, to mark@communityfoundationci.org. **Simply respond with a YES or NO to adopt the slate as presented.**

Thank you for your membership and your participation in this important process.

Mark Roberts, CFRE
Governance Chair
AFP Central Illinois Chapter

AFP - Central Illinois Chapter

Proposed slate for 2012 Chapter Officers & Board (term expiration in parenthesis)

Chapter President, Kristen Berchtold, CFRE (2012)
Vice President of Development, PARC
kberchtold@arcpeoria.org

President-Elect, Kimberly Weeks, CFRE (2012)
Program Manager, Heart of Illinois Big Brothers Big Sisters
kimberlyweeks227@gmail.com

Past President/Governance & Scholarship Chair, Mark Roberts, CFRE (2012)
CEO, Community Foundation of Central Illinois
mark@communityfoundationci.org

Secretary, Beth Gilbert (2013)
Director of Development/Marketing, Greater Peoria Family YMCA
bgilbert@peoriaymca.org

Treasurer, BreeAnn Hohulin (2012)
Development Officer, Illinois Central College Educational Foundation
breeann.hohulin@icc.edu

Assistant Treasurer, Kirstin Marshall (2012)
Director of Business Services/Marketing, Methodist College of Nursing
kamarshal@mcon.edu

Government Relations Chair, Roger Meyer, CFRE (2012)
Chief Development Officer, OSF Healthcare Foundation
roger.meyer@osfhealthcare.org

VP Membership Services, Robin Ballard (2013)
Executive Director and CDO, Illinois Central College Educational Foundation
rballard@icc.edu

VP Professional Advancement, Rachel Sprenkle (2013)
Donor Relations Manager, The Nature Conservancy
rsprenkle@tnc.org

VP Chapter Communications, Kimberly Weeks, CFRE (2012)
Program Manager, Heart of Illinois Big Brothers Big Sisters
kimberlyweeks227@gmail.com

VP External Affairs, Emily Happach (2012)
Special Events Coordinator, The Children's Home
ehappach@chail.org

VP Public Relations, Rich Draeger, CFRE (2013)
Assistant Development Director, The Salvation Army
rich_draeger@usc.salvationarmy.org

Every Member Campaign Chair, Jenna Ciccirelli (2013)
Development Officer, Lakeview Museum
jenna@lakeview-museum.org

Diversity Chair, Shelly Smith, CFRE (2012)
Senior Director of the Bradley Fund, Bradley University
ss@bradley.edu

At Large Directors

Jeff Parmenter (2012)
Executive Director, Heart of Illinois Big Brothers Big Sisters
jeff@hoibbbs.org

Mike Fifhause (2012)
Development Director, W.D. Boyce Council
michael.fifhause@scouting.org

Danielle Easton (2013)
Development Director, Crittenton Centers
daniellee@crittentoncenters.org

Pamela Perrilles (2013)
Executive Director, CASA of Peoria County
pperrilles@peoriacounty.org

Every Member Campaign Update

Hello Central Illinois AFP members. I hope you all have enjoyed this warm weather as we head towards fall.

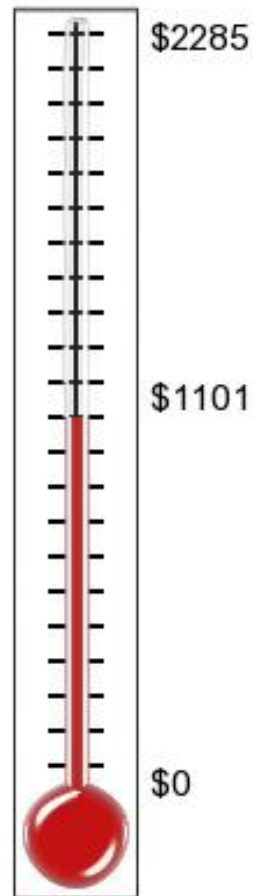
Our chapter goal for this year's Every Member Campaign is \$2,285 and the giving is entering the home stretch. As your chair, I hope that you will consider making a donation. With your generous gift to the Every Member Campaign, you help determine the future growth and development of our profession. Each year that we achieve our chapter goal, we receive a grant back that is used to fund programs, support diversity and grow our membership.

We have stalled as of recent weeks, so I hope that now that we are in October and heading towards National Philanthropy Day in November, we can increase our participation!

To date we have received \$1,101, or 48% of our chapter goal.

Please consider your gift today. As a reminder, there are multiple ways to give, including the easiest option, online at www.afpnet.org and click on Make a Gift.

If you have made a gift recently, and want to make sure it was properly credited to our chapter, or if you have questions, please feel free to email me at rich_draeger@usc.salvationarmy.org or stop me at a chapter meeting with any questions!



Thermometer created via <http://www.fasttrackfundraising.com/fundraising-thermometer.php>

Please welcome Jeff Scheirer, the new Database Manager for our Chapter! Jeff is the Community Partnership Manager at Heart of Illinois Big Brothers Big Sisters. His duties with AFP will include designing and e-mailing the monthly newsletters, sending e-blasts, and maintaining the database. He can be contacted at jeffs@hoibbbs.org.

Special Events Calendar

Contact Kimberly Weeks at kimberlyweeks227@gmail.com to add your organization's special events to our AFP "master" special events calendar. This calendar can be accessed on our website under the Members section.